

Copyright Decision Tool: How do I clear the rights for my OER?



Instructions for use

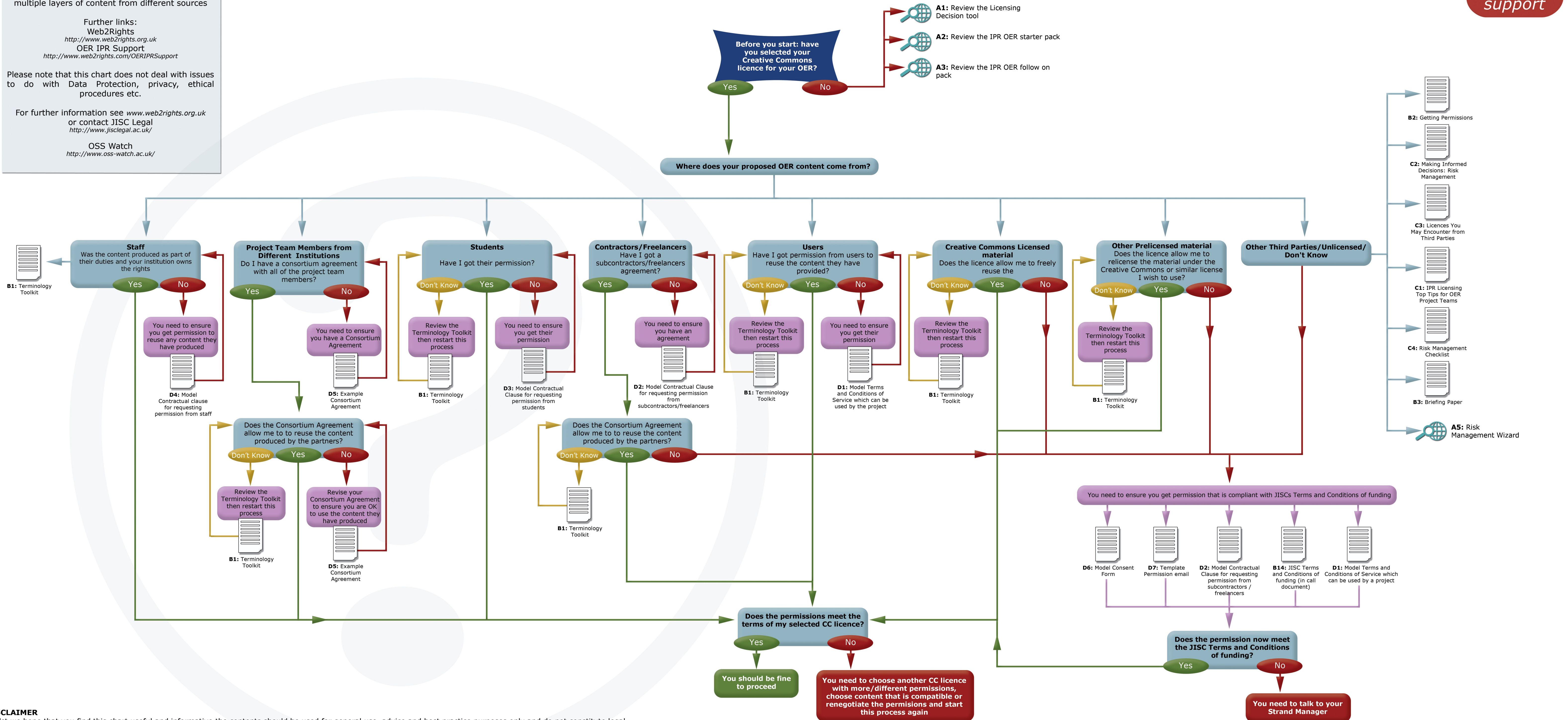
Use this chart to understand the right issues which may arise in content you wish to use in your OER, and the tools you can refer to in order to deal with the flagged issues. Remember to repeat this process for each piece of content because there might be multiple layers of content from different sources

Further links:
 Web2Rights
<http://www.web2rights.org.uk>
 OER IPR Support
<http://www.web2rights.com/OERIPRSupport>

Please note that this chart does not deal with issues to do with Data Protection, privacy, ethical procedures etc.

For further information see www.web2rights.org.uk or contact JISC Legal
<http://www.jisclegal.ac.uk/>

OSS Watch
<http://www.oss-watch.ac.uk/>



DISCLAIMER
 Whilst we hope that you find this chart useful and informative the contents should be used for general use, advice and best practice purposes only and do not constitute legal advice. Although we believe the contents are up to date and a true representation of best practice advice, we can give no assurances regarding the accuracy, currency or applicability of any of the contents in relation to specific situations and particular circumstances. In such circumstances appropriate legal advice should always be sought. Use of this resource is entirely at the users own risk.

www.web2rights.com/OERIPRSupport
 ©HEFCE 2010 Some rights reserved



A3A: Licensing Decision Flowchart

Creative Commons UK



JISC legal information

web2rights helping you to engage with the web

